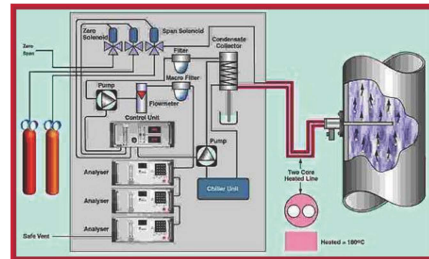


Why Choose **Thomas CEMS** total pump solutions?

- German origin, durable quality
- The only pump solution provider in the industry, with flue sampler pump and condensation drainage peristaltic pump solutions
- The brand new 1610AC is custom designed to meet international CEMS industry standard, with superior quality to industry peers
- SR25, the condensation drainage pump, favored by many reputable CEMS vendors worldwide



Total Pump Solutions for **CEMS**



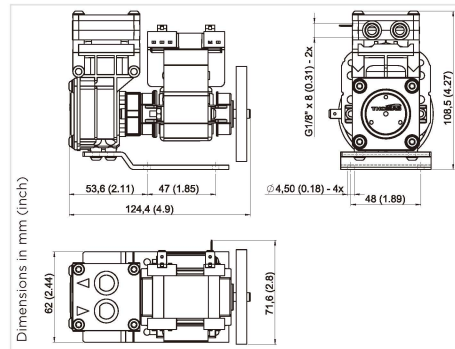
1610AC



SR25

Diaphragm Pump 1610VD AC FKM

Flow	6.0 l/min
Pressure (Max.)	1.3 bar
Vacuum level (Max.)	75%



- FKM elastomer, able to withstand flue chemical erosion
- Optimized structure design, a guarantee of durability of key components

Pneumatic Data

Model no.	16100720
Flow (Max.)	6.0LPM
Intermittent pressure (Max.)	1.3bar
Continuous pressure (Max.)	1.0bar
Restart Pressure	Ambient pressure
Intermittent vacuum level (Max.)	75%
Continuous vacuum level (Max.)	75%
Restart Vacuum (Max.)	Ambient pressure

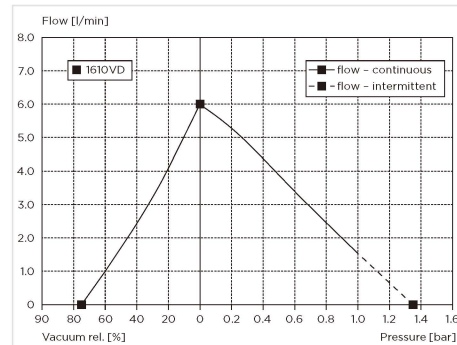
Electrical Data

Motor type	Shaded pole
Nominal voltage	230V/50Hz
Nominal speed	2700rpm
Current consumption	0.24A
Starting current	0.24A
Motor insulation class	H
Protection class	IP00
Thermal switch	165°C

General Data

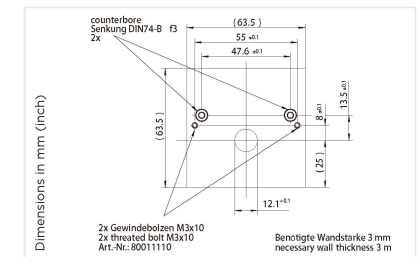
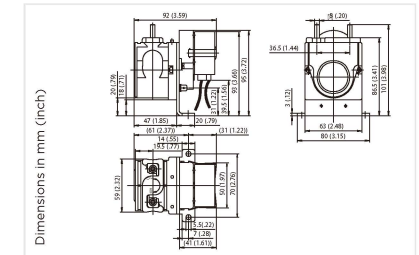
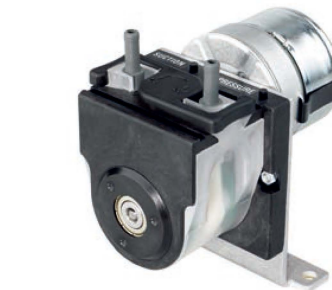
Ambient temperature	5 to 40 °C
Media temperature	5 to 40 °C
Port direction	A
Pneumatic connection	Thread size G1/8"
Mounting base	Mounting plate - through hole Ø 4.5 mm (4x)

流量曲线



Peristaltic Pump SR25

230V/50Hz synchronous motor, continuous operation



Performance Data

	1rpm	5rpm	10rpm
Nominal speed	1rpm	5rpm	10rpm
Flow (ml/min)	1	5	10
Pump model	20251739	20251352	20251356
Voltage	230V/50Hz		
Motor	Synchronous		
Power consumption	7.5W		
Motor insulation class	E		
Protection class	IPOO		
Weight	0.39kg		
Tubing model	92025549		
Tubing material	Novoprene with PVDF connector		
Tubing specification	4.1mm X 1.6 mm		



Diaphragm Pump



Peristaltic Pump